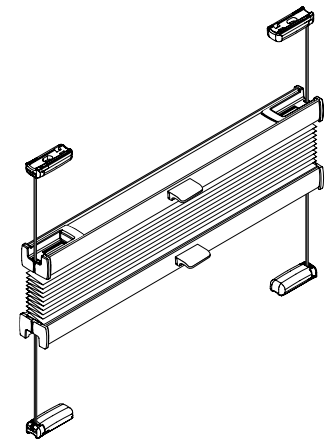


# VS2

## Montage- und Bedienanleitung

*Assembly and operating instructions  
Notice de montage et mode d'emploi*



02 / 2021

technische Änderungen bleiben  
vorbehalten

*subject to technical change  
sous réserve de modifications techniques*



04046046444558

# A Montage

Fixation – Montage

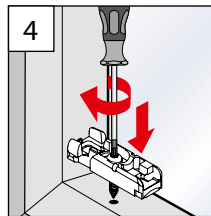
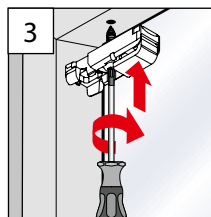
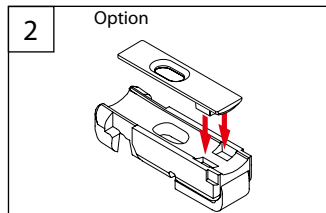
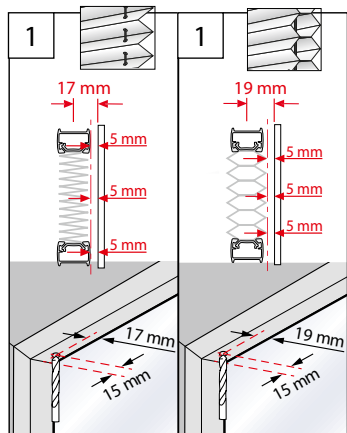
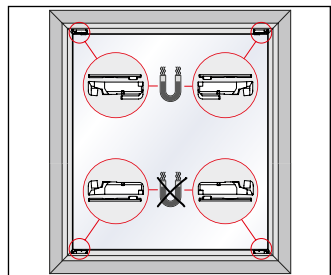
→ **Bitte nur beiliegende Schrauben verwenden!**

Please use only the enclosed screws! - Veuillez utiliser seulement les vis jointes!

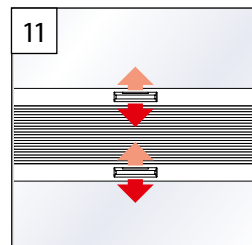
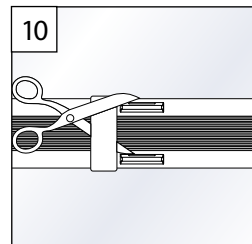
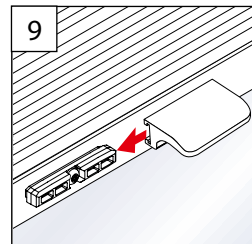
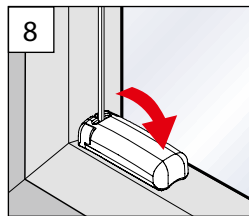
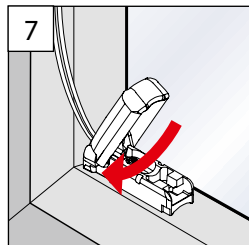
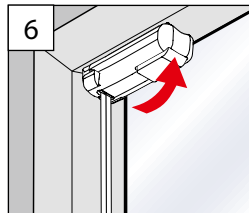
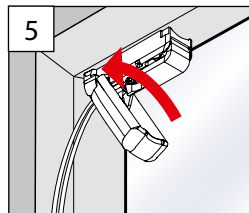
## SPANNSCHUH

TENSION CORD BRACKET

SUPPORT DE CÂBLES



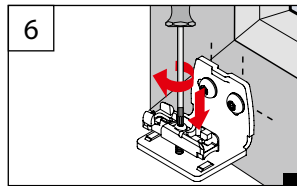
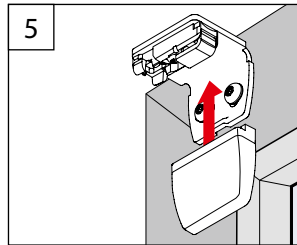
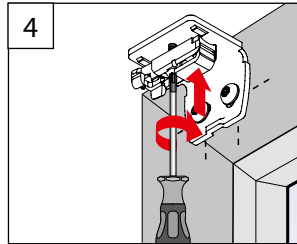
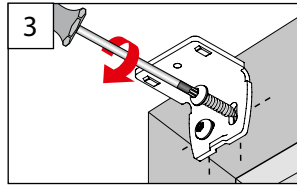
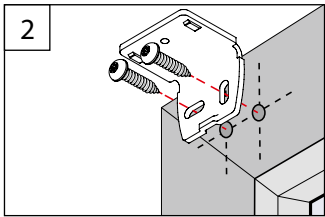
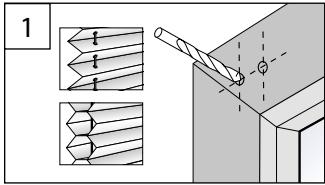
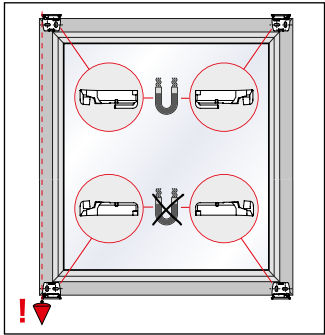
1



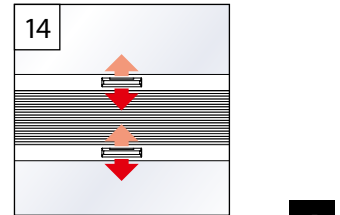
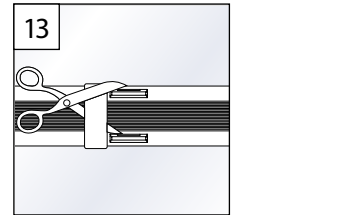
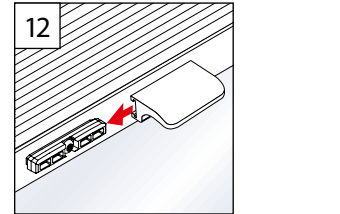
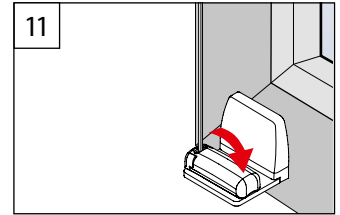
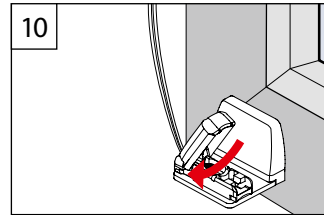
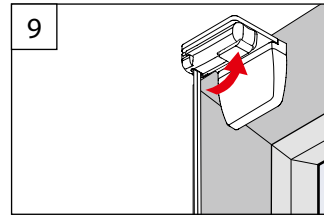
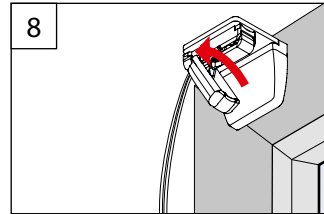
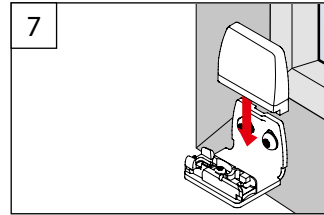
2

# WANDWINKEL

WALL FIXING BRACKET - SUPPORT MURAL



3



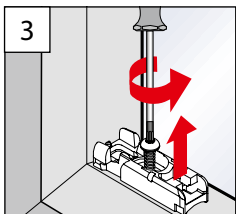
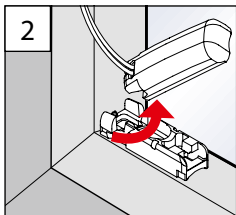
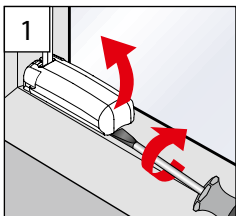
4

## B Demontage

Dismantling – Démontage

### SPANNSCHUH

TENSION CORD BRACKET – SUPPORT DE CÂBLES



### WANDWINKEL

WALL FIXING BRACKET – SUPPORT MURAL

