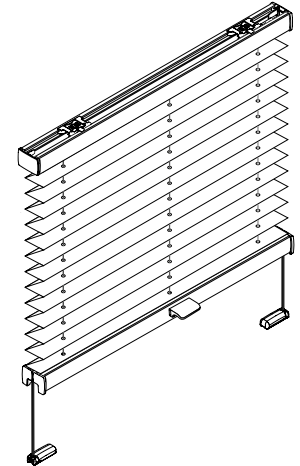


# VS1, VS3, VS SD

Montage- und  
Bedienanleitung

*Assembly and operating instructions  
Notice de montage et mode d'emploi*



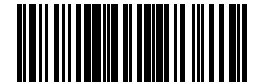
02 / 2021

technische Änderungen bleiben

vorbehalten

*subject to technical change*

*sous réserve de modifications techniques*



04046046444572

# A Montage

Fixation – Montage

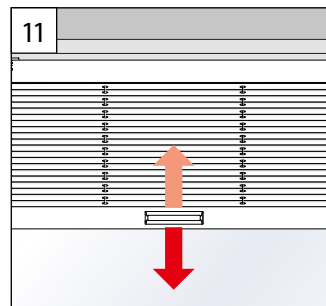
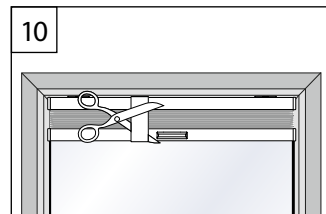
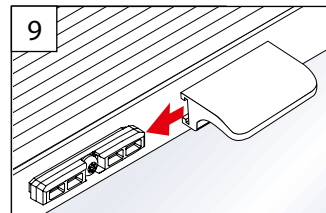
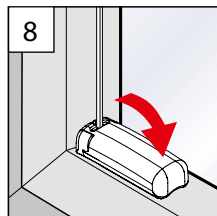
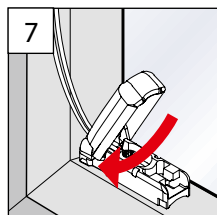
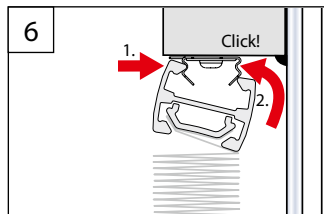
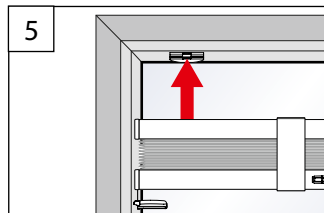
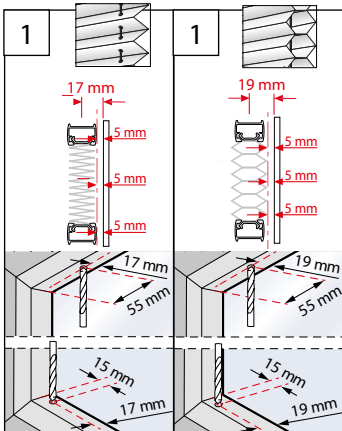
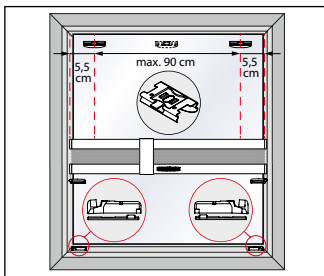
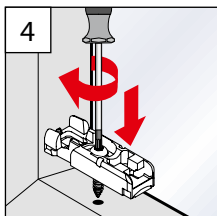
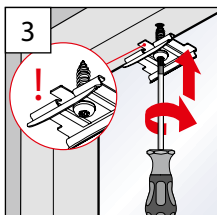
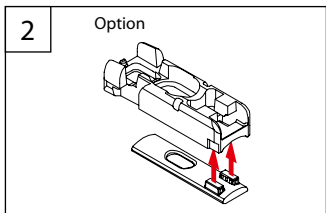
→ **Bitte nur beiliegende Schrauben verwenden!**

Please use only the enclosed screws! – Veuillez utiliser seulement les vis jointes!

## DECKENCLIP / SPANNSCHUH

CEILING CLIP / TENSION CORD BRACKET

CLIP PLAFOND / SUPPORT DE CÂBLES

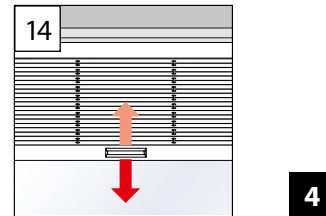
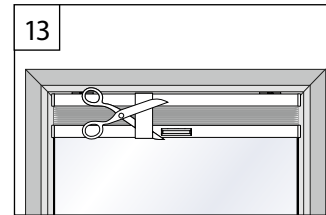
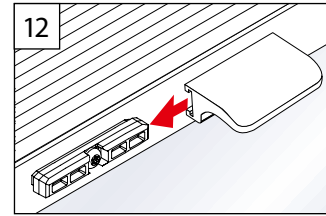
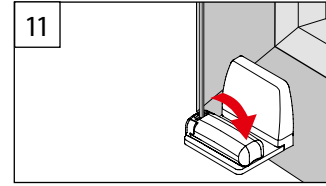
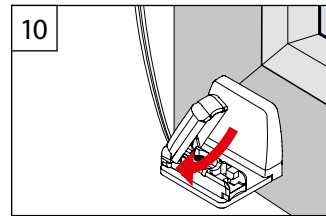
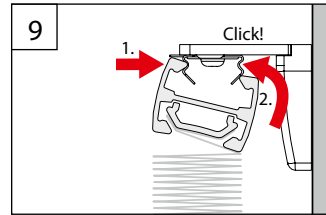
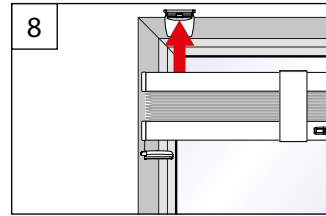
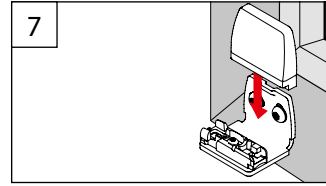
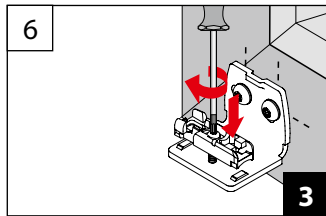
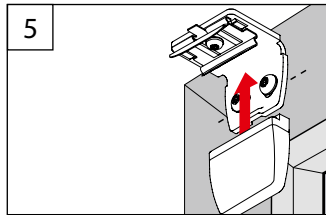
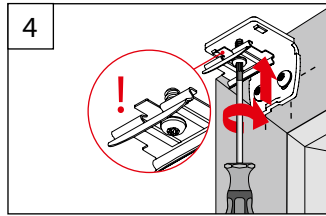
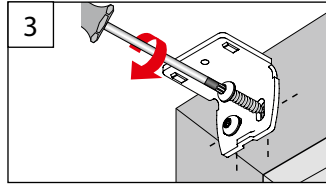
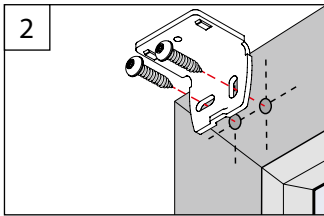
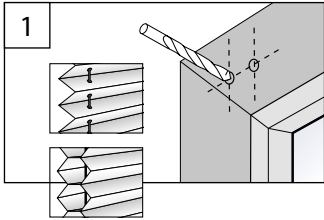
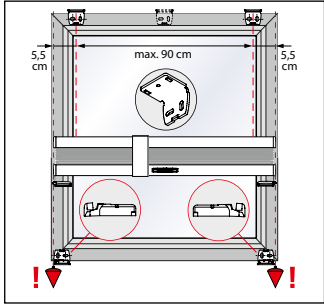


1

2

# DECKENCLIP / WANDWINKEL

CEILING CLIP / WALL FIXING BRACKET – CLIP PLAFOND / SUPPORT MURAL

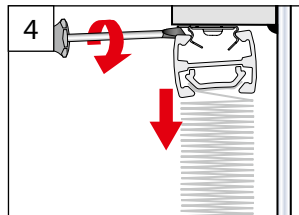
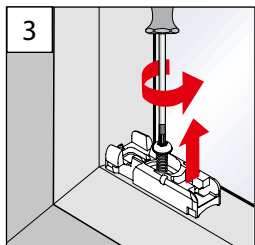
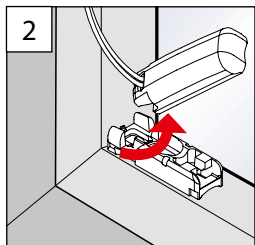
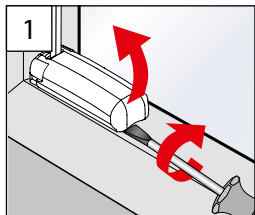


## B Demontage

Dismantling – Démontage

### SPANNSCHUH

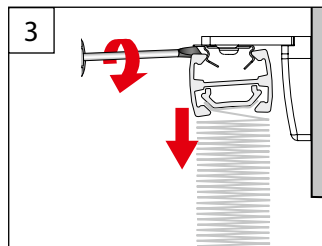
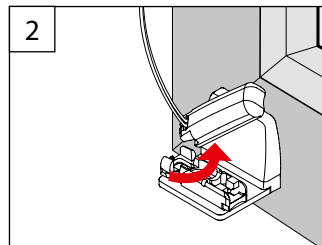
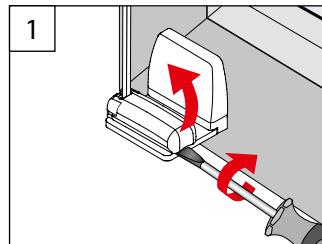
TENSION CORD BRACKET – SUPPORT DE CÂBLES



5

### WANDWINKEL

WALL FIXING BRACKET – SUPPORT MURAL



6